

ABOUT

AVTDESIGN

Hong Kong Registered Parent Company

Since

2007

Subsidiaries:

AVT**OFFICES**

AVT**ARCHITECTS**

AVT**COMMUNITIES**

AVT**CONTRACTING**

AVT**DETAILS**

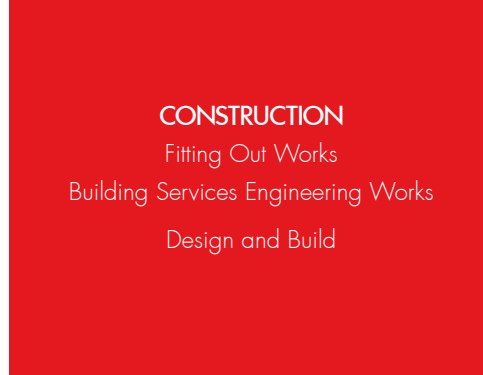
AVT**E&M**

AVT**ENGINEERING**

AVT**RETAILS**

A V T
S T U
D I O

ABOUT



AVT OFFICES

is a Local Fitout Contractor specialized in office interior fitout works. We provide all-round construction services to our Client in delivering the office relocation project from initial planning stage to design development and to the project completion.

Advisory and Professions services would outline the technical considerations and exploit the site character (value) at initial stage; and which can be fully considered at design stage.

NEW OFFICE CONSTRUCTION

We provide construction services to the new office project in scale ranging 3,000SQF to whole-floor office space. Our team will take charge the project communication role amongst stakeholders (landlord / BMO, client, IT and security team, building NSC) and drive the fitout project to the completion effectively.

Our engineer would direct communicate with domestic security and IT vendors and building nominated contractor (NSC) in order to resolve all site constraints and manage all technical issues in cost effective manner.

EXISTING OFFICE RESTACK

ZERO interruption to the business operation, NO disturbance to Customers and PRO-active handling of staffs' feedback are the fundamental considerations to existing office restack works. We plan ahead the phasing and schedule the critical construction activities over the weekend; and resume all services on following business day seamlessly.

TURN KEY SERVICE

Collaborated with AVT Studio or the external Concept Designer, we provide a comprehensive Design and Build Solutions. We provide technical assistance to designer with engineering design works; and strive for the early completion of works and allow quality inspection with designer prior to the project handover.

ABOUT

VISION

We are committed to designing and delivering **inspiring, functional and sustainable** workplaces that empower business to thrive and enable well-being of everyone who uses them

MISSION

To make our clients' life happier by delivering exceptional office fitout solutions
To transform challenges into opportunities with innovative ideas

VALUES

Professionalism - combining expert know-how knowledge with swift execution to delivery high-quality works

Innovation - continuously exploring cutting-edge technologies and smart solutions to state ahead

Integrity - uphold honesty and trustworthiness to build long-term business

MEET OUR LEADER



Founder
with AVT Design

Project-In-Charge
(Builder's Work)

Mr. Patrick Hong leads our professional teams in **AVT OFFICES** to deliver "Today's Office". Apart from conventional turn-key fitting out solution for working space, we provide "**workplace+**" values to our customers with added technology, cost effective, environmental as well as operational friendly solution.

In addition to our satisfactory yet cost competitive construction services to both new and existing interior office space, we have been working with various concept designers to deliver "Design & Build" service.

Patrick is a Chartered Building Surveyor (MRICS) with strong support of in-house architects, interior designers, construction managers, contract managers, site supervisors...etc. to serve your well-esteemed company.



WORKPLACE
+



Design-In-Charge
(Designer Partner)



Project-In-Charge
(Building Services)

AIA WEALTH SELECT CENTRE

TSIM SHA TSUI | HK

INTERIOR WORK

Design & build



CANADA GOOSE OFFICE

WAN CHAI | HK

INTERIOR WORK

Design & build



CARTIER OFFICE

CENTRAL | HK

INTERIOR WORK

Design & build



| AVT selected project reference

DOLCE & GABBANA OFFICE

TSIM SHA TSUI | HK

INTERIOR WORK

Design & build



| AVT selected project reference



ERMENEGILDO ZEGNA OFFICE

KOWLOON BAY | HK

INTERIOR WORK

Design & Build



ERMENEGILDO ZEGNA OFFICE

TSIM SHA TSUI | HK

INTERIOR WORK

Design Development

Construction



| AVT selected project reference



EY MTEL OFFICE

KWUN TONG | HK

INTERIOR WORK

Design & Build

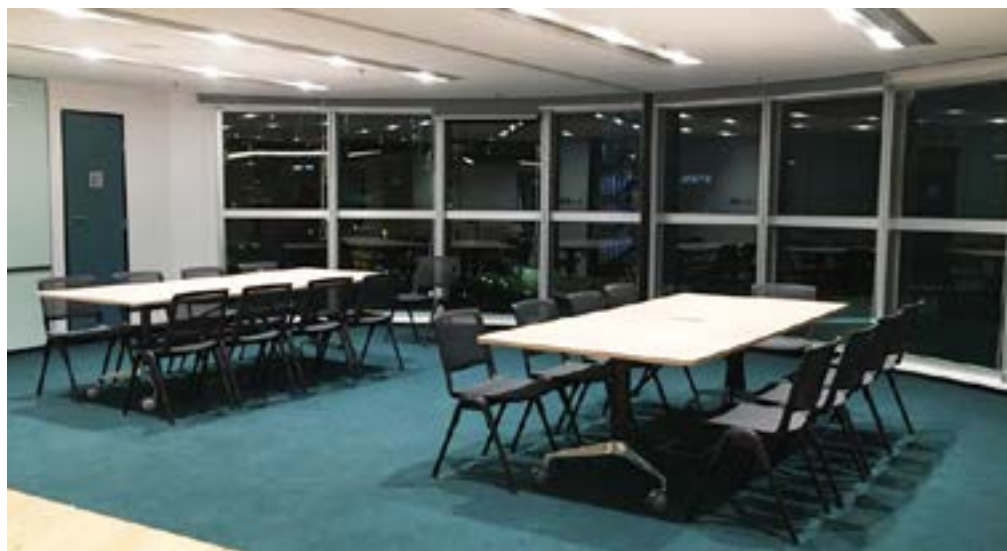
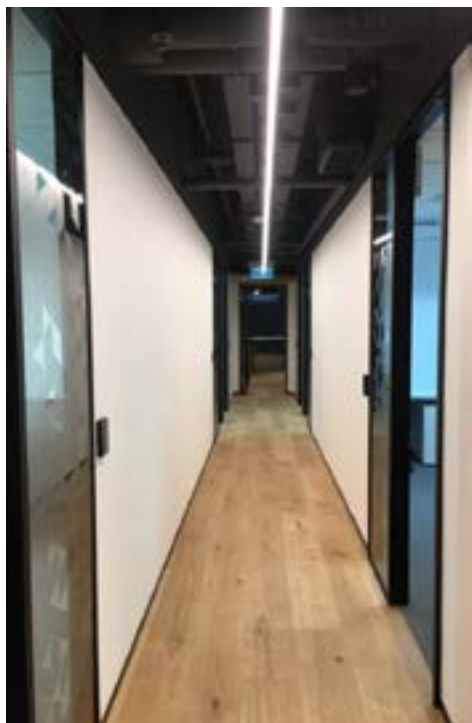


FIN-TECH OFFICE

HKSTP | HK

INTERIOR WORK

Construction



HKJC HEADQUARTER SECURITY CONTROL ROOM

HAPPY VALLEY | HK

INTERIOR WORK

Construction



IWC SCHAFFHAUSEN OFFICE

CENTRAL | HK

INTERIOR WORK

Design & Build



KENETIC CAPITAL OFFICE

CENTRAL | HK

INTERIOR WORK

Design & Build



| AVT selected project reference

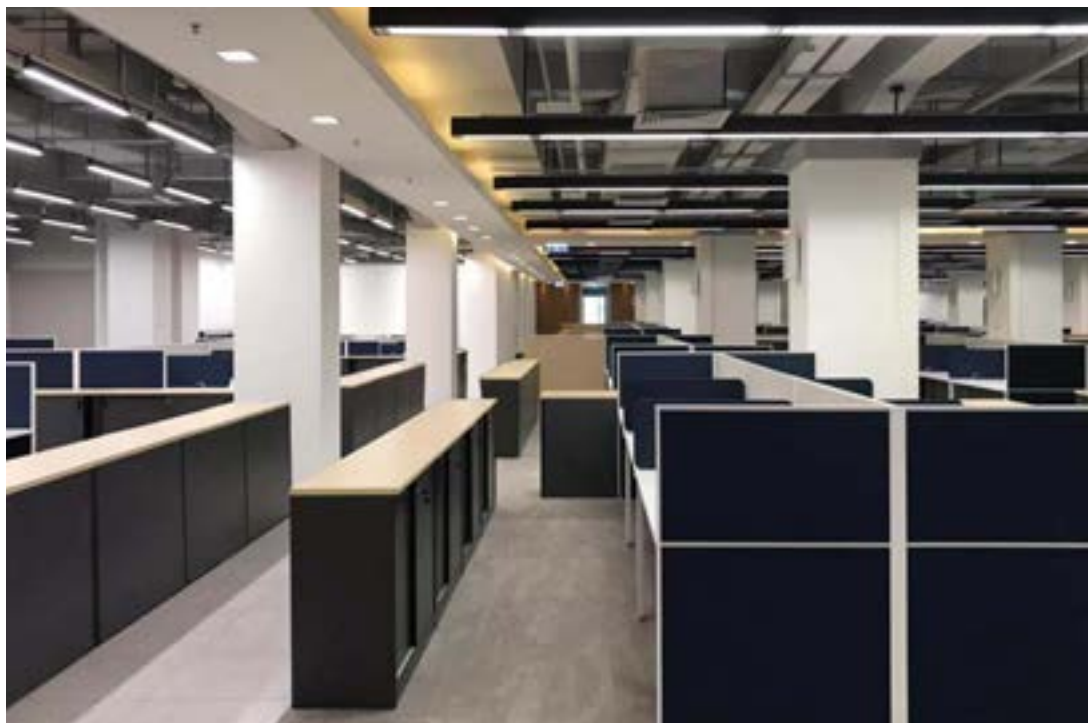


RALPH LAUREN OFFICE

LAI CHI KOK | HK

INTERIOR WORK

Design & Build



| AVT selected project reference



SALVATORE FERRAGAMO OFFICE

WONG CHUK HANG | HK

INTERIOR WORK

Design & Build

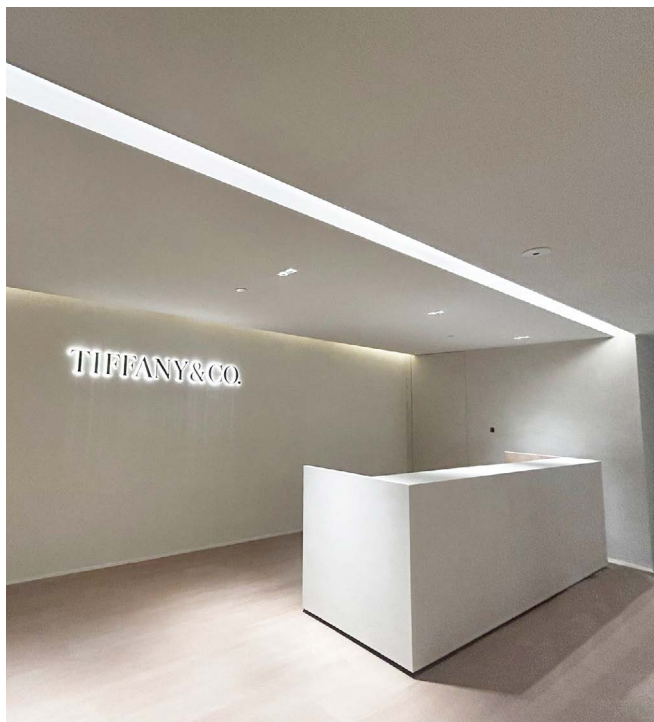


TIFFANY & CO. OFFICE

QUARRY BAY | HK

INTERIOR WORK

Design & Build



TIFFANY & CO. OFFICE

TSIM SHA TSUI | HK

INTERIOR WORK

Design & Build



ULFERTS OFFICE

WAN CHAI | HK

INTERIOR WORK

Design & Build



VACHERON CONSTANTIN OFFICE

CENTRAL | HK

INTERIOR WORK

Design & Build



| AVT selected project reference



VAN CLEEF & ARPELS OFFICE

CENTRAL | HK

INTERIOR WORK

Construction



| AVT selected project reference



BOTTEGA VENETA OFFICE

SHANGHAI | PRC

INTERIOR WORK

Project management

Concept design

Detail design

Site survey



GPS LEGAL OFFICE

QUARRY BAY | HK

INTERIOR WORK

Concept design

Project management

Detail design



| AVT selected project reference



IFS RESIDENCES OFFICE

CHENGDU | PRC

INTERIOR WORK

Concept design

Detail design



| AVT selected project reference



CHOW TAI FOOK OFFICE

KOWLOON TONG | HK

INTERIOR WORK

Concept design



| AVT selected project reference



LANE CRAWFORD OFFICE

WONG CHUK HANG | HK

INTERIOR WORK

Spatial & master planning

Design development

Interior design



| AVT selected project reference



WELLESLEY PARTNERS OFFICE

CENTRAL | HK

INTERIOR WORK

Concept design



WORLD COMMERCE CENTRE LIFT LOBBY

TSIM SHA TSUI | HK

INTERIOR WORK

Project management

Detail design



| AVT selected project reference



MATRIX OFFICE

ARA DAMANSARA | MALAYSIA

INTERIOR WORK

Project management

Concept design

Detail design

Site survey



| AVT selected project reference



CORPORATE OFFICE

ANGELES CITY | PHILIPPINES

INTERIOR WORK

Design & build



| AVT selected project reference

AIA OFFICE

WAN CHAI | HK

INTERIOR WORK

Concept design



| AVT selected project reference

BERKELEY GROUP OFFICE

BEIJING | PRC

INTERIOR WORK

Design proposal



| AVT selected project reference



KPMG OFFICE

MACAO

INTERIOR WORK

Design proposal (Tender bidding)



| AVT selected project reference

THE BOARD OF MANAGEMENT OF THE CHINESE PERMANENT CEMETERIES OFFICE

WAN CHAI | HK

INTERIOR WORK

Design proposal



| AVT selected project reference



CONTACT

www.avtoffices.com.hk

AVT-Offices@avtdesign.com.hk

HONG KONG

9/F, Sing Shun Centre, 495 Castle Peak Road,
Lai Chi Kok, Kowloon, Hong Kong

Mr. Patrick Hong

+852 3696 6463

+852 5743 3208 (Whatsapp)

SHANGHAI

Room 505, Building A, No.208 Wending Road, Xuhui District,
Shanghai, PRC 200030